

Bioinformatics Data Integration

Will you have enough time to discover the next wonder drug?

Or are you spending most of your time integrating and cleansing data from multiple sources, cataloging, categorizing, and collating data, manipulating data by hand, or programming in Perl?

“[Science is] long periods of drudgery, and brief flashes of excitement”. -- Robert P. Kirshner

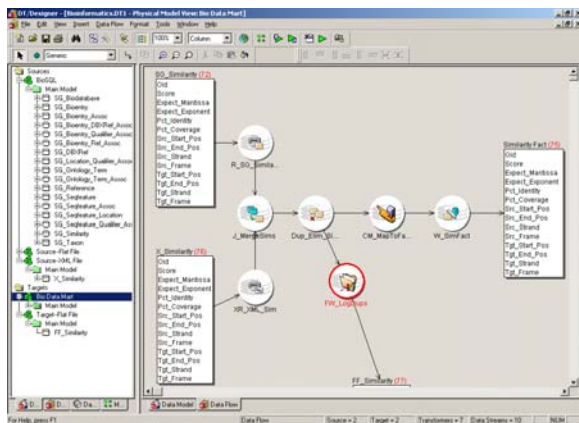
Would you like to prove Kirshner wrong? Rapid Objects and Embarcadero Technologies offer a solution that reduces the drudgery and gives you and your firm more time for:

- Thinking about gene expression data
- Interpreting the biology of genetic profiles
- Investigating specific biomedical problems
- Identifying genes that are important in disease

In addition to being easy to use, the solution is auditable and extensible.

What does it look like?

The Rapid Objects and Embarcadero Technologies bioinformatics data integration platform is geared toward providing informatics processing that is more easily composed, more easily shared among researchers, and that has built-in audit trails. The following screen shot shows an example of a visual data processing definition built with the tool.



Key Features

The solution is built upon Embarcadero's DT/Studio visual data integration tools, and Rapid Objects' custom bioinformatics components and Rapid Start services. The Embarcadero Technologies' solution has the following features that make it a solid platform for current and future development:

- Automatic discovery of data source schemas – to save you from creating and updating them by hand
- Support for both relational database and XML sources – Who knows what internal or external data will help with an analysis?
- Easy to use, visual interface – so that you can focus on the science
- Support for manipulation of data in SQL, Java, and other languages – so that you can reuse previous work
- Generation of audit records – to provide collection and transformation details (when called for)

In addition, our DT/Studio-based solution is built on an extensible architecture that enables you to more easily leverage your organization's work and that of third parties.

Contact us

Contact us now to start creating an environment where your time and talents can be directed toward exciting and valuable goals.

David Caney
 Rapid Objects, Incorporated
 Laguna Beach, CA
 (949) 499-3913
 David.Caney@RapidObjects.com
 www.rapidobjects.com

Robert Karlovich
 Embarcadero Technologies
 San Francisco, CA
 (408) 264-1490
 Robert.Karlovich@embarcadero.com
 www.embarcadero.com